

BUILDING 4

580 North 54th Street, Chandler Arizona

available for sale or lease

10chandler.com

10 CHANDLER



Building Size

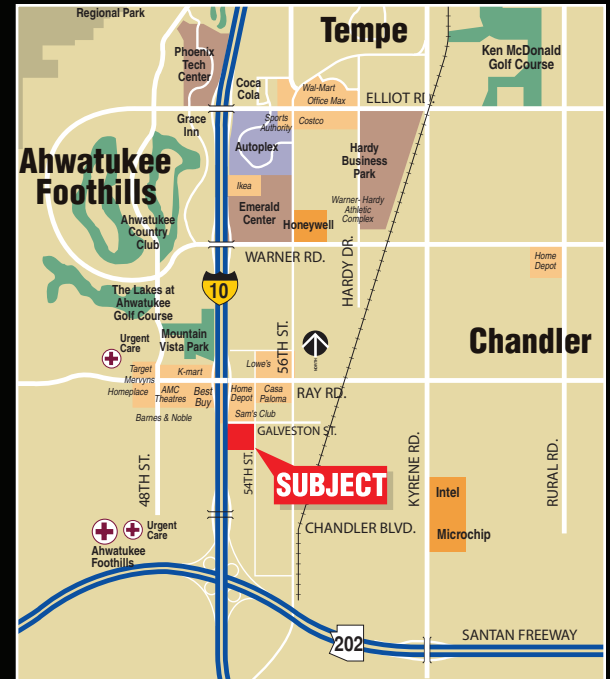
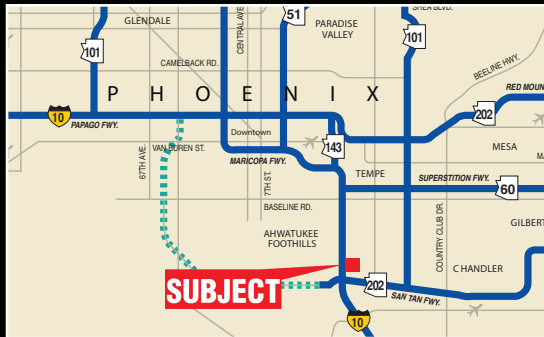
Approximately 39,054 SF
freestanding building

Available Space

Approximately 22,316 SF

Features

- Quarter Mile of frontage along Interstate 10
- I-1 PAD, zoning, City of Chandler
- Close proximity to quality amenities, housing and employment
- 19' clear height
- 1600 amp 277/480v
- 1 dock high loading position
- 10 grade ramps
- 40 X 50 column spacing
- Skylights
- Move in ready spec suites



a development of

LPC

LINCOLN PROPERTY COMPANY

MARK DETMER, SIOR, CCIM
Executive Director
(602) 229-5971
mark.detmer@cushwake.com

BO MILLS, SIOR, CCIM
Executive Director
(602) 229-5970
bo.mills@cushwake.com

MIKE KASULAITIS
Associate Director
(602) 229-5969
mike.kasulaitis@cushwake.com

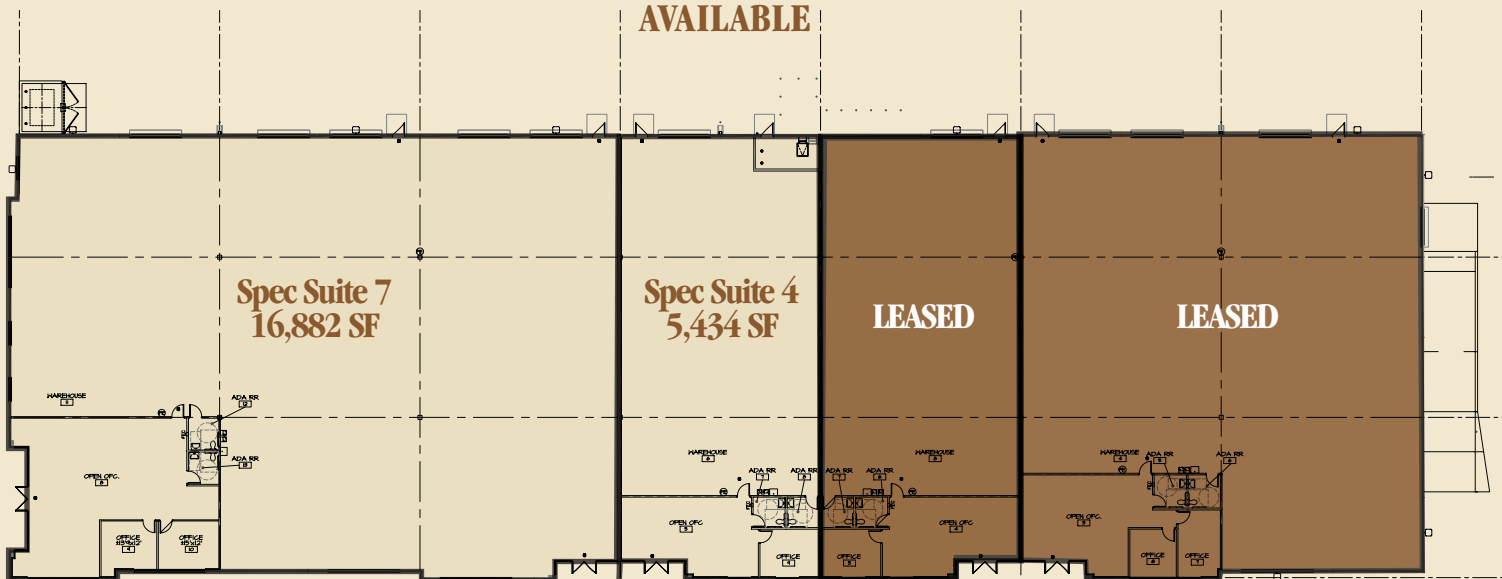
*introducing a new business park in Chandler
with prime Interstate 10 frontage*



**CUSHMAN &
WAKEFIELD**
Global Real Estate SolutionsSM

10 CHANDLER

**±22,316 SF
AVAILABLE**



10chandler.com

MARK DETMER, SIOR, CCIM
Executive Director
(602) 229-5971
mark.detmer@cushwake.com

BO MILLS, SIOR, CCIM
Executive Director
(602) 229-5970
bo.mills@cushwake.com

MIKE KASULAITIS
Associate Director
(602) 229-5969
mike.kasulaitis@cushwake.com

LPC
LINCOLN PROPERTY COMPANY

No warranty or representation, express or implied, is made as to the accuracy of the information contained herein, and same is submitted subject to errors omissions, change of price, rental or other conditions, withdrawal without notice, and to any specific listing conditions, imposed by our principals.

 **CUSHMAN & WAKEFIELD**
Global Real Estate SolutionsSM